

# **A private pilgrimage of Assisi and Rome escorted by Father Steve Kluge of**

## **St. Francis of Long Beach Island.**

**October 26<sup>th</sup>-November 3<sup>rd</sup>, 2022**

Many of you have traveled to Italy before but you now have the opportunity to follow the footsteps of St. Francis. Your journey will begin with a relaxing drive into the Italian countryside to the walled town of Assisi. It was within the walls of Assisi that St. Francis was born to a wealthy family. You will explore St. Francis Basilica set in the walls of Assisi that houses his tomb. Also, St. Clare's Church. St. Clare was one of the first followers of St. Francis and devoted her life in serving the poor.

### **Our private tour includes:**

Round trip airfare non-stop on United from Newark (including all current government taxes and fees), private motor coach with professional driver/guide, seven nights first class hotels as indicated: (4-Giotto Hotel Assisi and 3-Hotel Palatino Rome), full breakfast daily and six dinners (two at local restaurants). Highlights include: Masses celebrated by Father Steve, Basilica of St. Mary of Angels, Casa del Cioccolato Perugia, St. Domenico Church, Sienna Cathedral, Catacomb of St. Sebastian, St. Peter's in Chains, Colosseum and Forum, Vatican Museum and Sistine Chapel, Scala Santa and St. Paul Outside the Walls Basilica.

The rate per person based on double occupancy is \$3698.00 (based on a minimum of 20 passengers) plus insurance. Insurance is based on age and the amount of trip. A limited amount of singles are available for a supplement of \$550.00. A deposit of \$500.00 is required to sign up and is non-refundable. Insurance is highly recommended and would have to be taken with initial deposit. Deposit and insurance must be done by check.

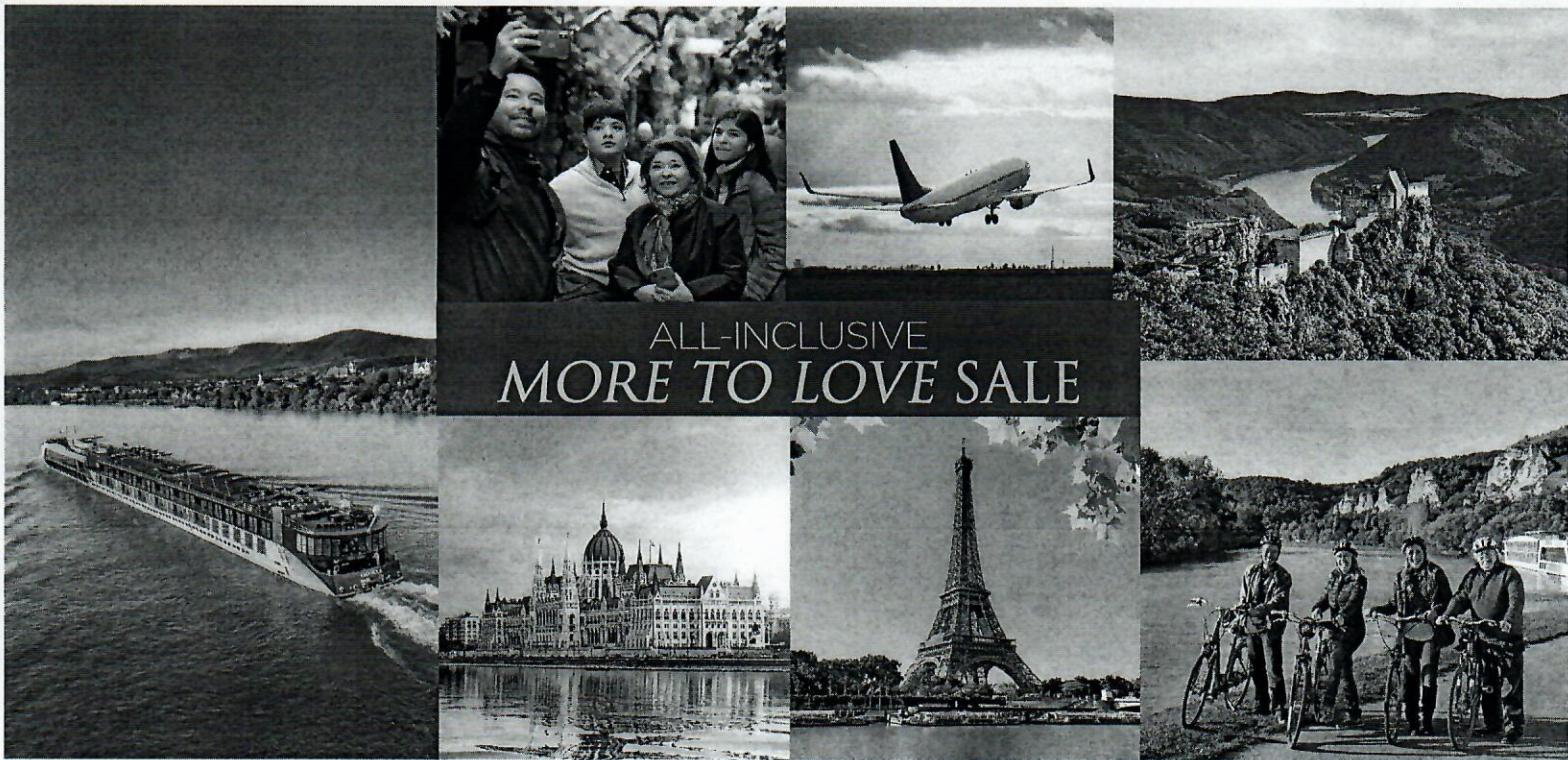
Passports are required and you must be fully vaccinated to travel according to Italy's requirements. Please see below the website for up to date information for travel to Italy.

[www.apply.joinsherpa.com/travel-restrictions.com](http://www.apply.joinsherpa.com/travel-restrictions.com)

For more information or to secure your reservation, please contact:

Tara at Home Town Travel, 128 Bartlett Avenue, West Creek, NJ 08092

Email Tara at [t.l.gaffney@comcast.net](mailto:t.l.gaffney@comcast.net) or call (609) 597-5100.



ALL-INCLUSIVE  
**MORE TO LOVE SALE**

**7-Night luxury river cruise, roundtrip airfare, land package, transfers, port charges and Travel Waiver Plus from \$5,499 per person!**

Available on select 2022 Europe river cruises reserved and deposited by April 30, 2022

**WHAT'S INCLUDED IN OUR MORE TO LOVE PACKAGE:**

- » French Balcony Stateroom (valued up to \$5,298 per person)
- » Economy Roundtrip Airfare\* from more than 20 major gateways (valued up to \$1,000 per person)
- » Land Package\*\* (valued up to \$900 per person)
- » Roundtrip Airport/Ship Transfers (valued up to \$150 per person)
- » Port Charges (valued at \$210 per person)
- » Travel Waiver Plus (valued at \$175 per person)
- » Your clients' choice from more than 20 enriching small-group excursions
- » Complimentary wine and beer with lunch and dinner
- » Sip & Sail cocktail hour every evening
- » Fine dining in multiple venues - including The Chef's Table specialty restaurant
- » High-quality Wi-Fi and more

**ALTERNATE PACKAGES ARE AVAILABLE:**

7-night river cruise in a French balcony, roundtrip airfare\* OR land package\*\*, transfers, port charges and Travel Waiver Plus from **\$4,899 per person**

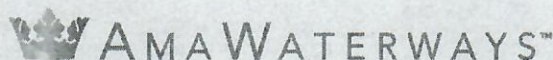
- OR -

7-night river cruise in a French balcony, port charges and Travel Waiver Plus from **\$3,899 per person**

**EASY REDEMPTION THROUGH OUR ONLINE BOOKING ENGINE**

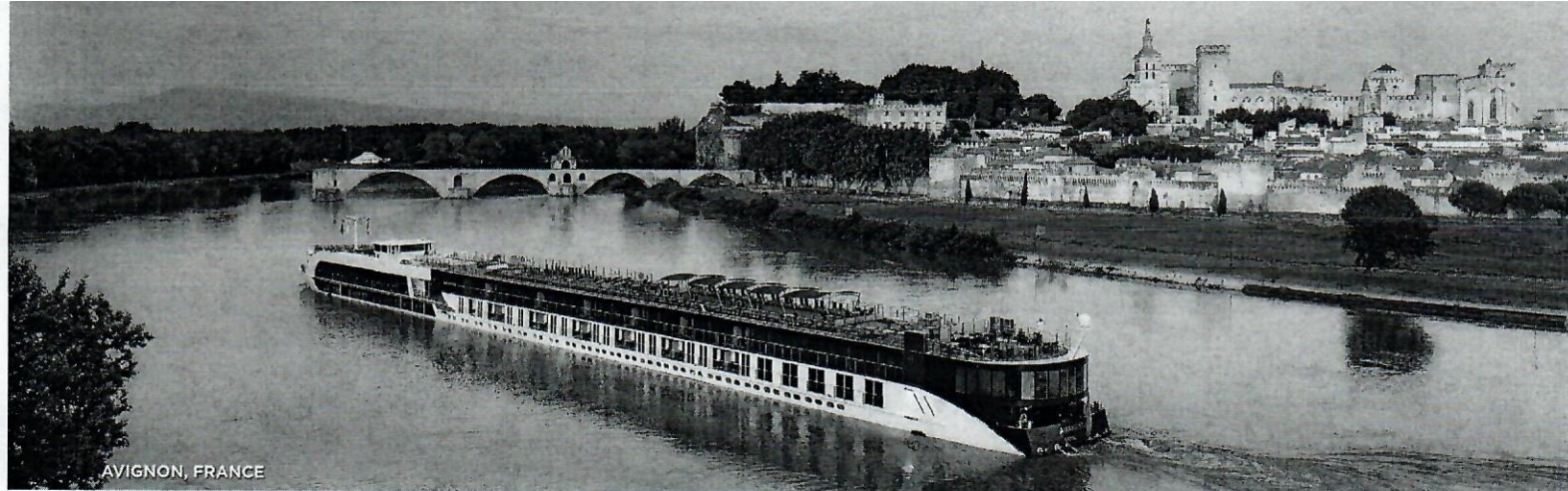
Call us at 800.626.0126 or book without waiting using our Online Booking Engine, available to you 24/7. For access, online booking instructions and applicable promo codes, download the manual within AmaWaterways' [Travel Advisor Portal](#).

Visit your Travel Advisor Portal  
 or call 800-626-0126 for details



\*From select gateways; see reverse side for details.

\*\*Available for Budapest, Prague or Amsterdam Pre or Post Land Packages Only; Paris, Lucerne/Zurich and Lake Como available for an additional \$500 per person.



AVIGNON, FRANCE

## LIMITED-TIME ALL-INCLUSIVE MORE TO LOVE SALE

7-night luxury river cruise, roundtrip airfare, land package\*\*, transfers, port charges and Travel Waiver Plus from **\$5,499 per person**. Available on select 2022 Europe river cruises **reserved and deposited by April 30, 2022**.

Ask about special solo traveler fares, alternate air gateways and upgrades to premium and business class air.

CRUISE ITINERARY	SHIP NAME	2022 EMBARKATION DATES	INCLUDED LAND PACKAGES
<b>Best of Holland &amp; Belgium</b> 7-nt cruise roundtrip from Amsterdam	AmaStella	Jun 25	2 nights Amsterdam
	AmaSiena	Dec 22	
	AmaCerto	Dec 27	
<b>Romantic Danube</b> 7-nt Vilshofen - Budapest cruise	AmaSonata	Apr 8	3 nights Prague
	AmaVerde	Apr 11	
	AmaVerde	Nov 21	
	AmaBella	Dec 26	
<b>Melodies of the Danube</b> 7-nt Budapest - Vilshofen cruise	AmaViola	Apr 8	2 nights Budapest
	AmaBella	Nov 21	3 nights Prague
<b>Legendary Danube</b> 7-nt Nuremberg - Budapest cruise	AmaLea	Dec 25	3 nights Prague
<b>Blue Danube Discovery</b> 7-nt Budapest - Nuremberg cruise	AmaSonata	Nov 25	2 nights Budapest 3 nights Prague
<b>Europe's Rivers &amp; Castles</b> 7-nt Luxembourg - Nuremberg cruise	AmaPrima	Nov 8*	3 nights Prague 3 nights Paris (additional \$500pp)
<b>Medieval Treasures</b> 7-nt Basel - Nuremberg cruise	AmaPrima	Nov 22	3 nights Prague 2 nights Zurich & 2 nights Lucerne (additional \$500pp)
<b>Rhine Castles &amp; Swiss Alps</b> 7-nt Amsterdam - Basel cruise or reverse	AmaSerena	Nov 7	2 nights Amsterdam
	AmaMora	Nov 14	3 nights Lake Como (additional \$500pp)
	AmaSerena	Dec 19	
<b>Captivating Rhine</b> 7-nt Amsterdam - Basel cruise	AmaStella	Jul 30	2 nights Amsterdam
	AmaCerto	Nov 15	2 nights Lucerne & 2 nights Zurich (additional \$500pp)
<b>Enchanting Rhine</b> 7-nt Basel - Amsterdam cruise	AmaStella	Jul 23	2 nights Zurich & 2 nights Lucerne (additional \$500pp)
	AmaStella	Nov 12	
	AmaCerto	Nov 22	
<b>Vineyards of the Rhine &amp; Moselle</b> 7-nt Amsterdam - Luxembourg cruise	AmaCerto	May 31	2 nights Amsterdam
	AmaPrima	Jun 28	
<b>Paris &amp; Normandy</b> 7-nt cruise roundtrip from Paris	AmaLyra	Apr 7	2 nights Paris (additional \$500pp)
	AmaDante	Aug 13	
<b>Colors of Provence</b> 7-nt Avignon - Lyon cruise or reverse	AmaKristina	Nov 24	3 nights Paris (additional \$500pp)
	AmaKristina	Dec 1	

\* Wine Cruise

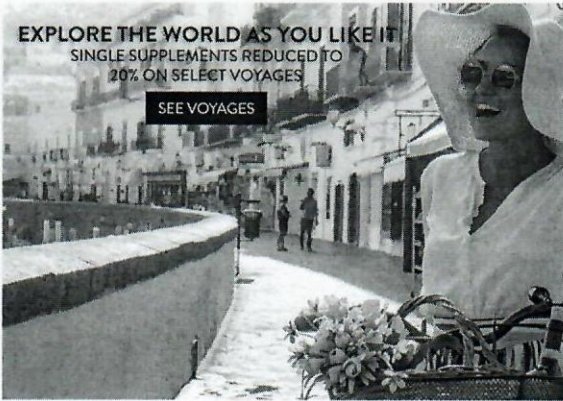
Note: Other land packages are available at brochure fare; ask for details.

**Terms & Conditions:** Offer is applicable new FIT bookings only, reserved and deposited between February 14 - April 30, 2022, and is applicable to select 2022 sailings. All rates are in USD, based on double occupancy and in a French balcony stateroom (based on availability; must pay additional for upgrades). Single Supplement is 25% on top of twin price, excluding A+, AA+ and Suites. Full payment is due for all sailings within 90 days of departure. **Special promotional rate of \$5,499 per person** includes one pre or post land package in Budapest, Prague or Amsterdam (based on select itineraries), economy roundtrip airfare from select gateways listed, airport/ship transfers (including hotel when applicable), port charges and special provision Travel Waiver Plus. **Special promotional rate of \$4,899 per person** includes pre or post land package in Budapest, Prague or Amsterdam (based on select itineraries) OR economy roundtrip airfare from select gateways listed above, transfers to the ship from either airport or hotel associated with package option, port charges and special provision Travel Waiver Plus. **Special promotional rate of \$3,899 per person** includes port charges and special provision Travel Waiver Plus. **Port charges of \$210 per person are non-commissionable.** Alternate pre or post land packages also available for an additional \$500 per person, based on select itineraries and sailings: Paris, Lucerne/Zurich and Lake Como. Promotions not applicable to triple/child fares. Offers are combinable with Past Guest Rewards, Consortia Amenity Programs; not combinable with other promotional offers. Offers are not combinable with Solo Traveler promotions or any other promotions/discounts. Offers are capacity-controlled and subject to modification, reduction or withdrawal without notice. Other brochured land programs, visas, and gratuities are additional. AmaWaterways reserves the right to correct any errors or omissions at any time. Other restrictions apply.

**Inclusive Economy Round-trip Airfare** applicable to the following gateways: ATL, BNA, BOS, CLE, CLT, CVG, DEN, DFW, DTW, EWR, IAD, IAH, JFK, LAX, MCO, MIA, MSP, OKC, ORD, PHL, PHX, PIT, SEA, SFO, STL, YUL, YYC, YYZ, YYJ, YVR, YLW, YEG, YXE, YQR, YWG, YQT, YOW, YQB, YHZ, YYT. Premium Economy air upgrade is available for an additional \$699 per person; Business Class air upgrade special is available for an additional \$3,499 per person. If choosing an alternate air gateway (not included above), an additional fee of \$199 per person will be assessed. Inclusive air is based on economy, round-trip, trans-Atlantic airfare departing from select gateways as published (based on availability). For all other sailings, the deposit requirement for Economy and Premium Economy Air is \$750 per person, of which \$550 per person is non-refundable up until 121 days prior to sailing and fully non-refundable thereafter. Business Class Air deposit is \$1,000 per person, of which \$800 per person is non-refundable up until 121 days prior to sailing and fully non-refundable thereafter. There will be an additional fee of \$199 per person if selecting an alternate gateway (not listed above) and a supplement for upgrades to other classes of service as noted. Premium Economy and Business class upgrades (if purchased) are guaranteed for long-haul flights, but not U.S. Domestic or Intra-Europe flights. Offers includes base economy ticket price, fuel surcharges, taxes and roundtrip airport transfers between the airport and ship and/or hotel for services purchased through AmaWaterways for a published itinerary only. Certain long-distance transfers not included. Once your airline tickets have been issued, any changes will be subject to penalty and any additional fare collection if not cancelled within 24 hours of ticketing will apply. Should the name on your airline reservation not match your passport exactly, your airline reservation will have to be cancelled, full penalties will be assessed and your reservation will have to be recreated subject to market pricing at the time of the new reservation. Custom itineraries, itinerary requests and schedule deviations are not accepted on this promotion. No recourse available for those who wish to change or cancel their selected flight schedules and air schedule is at the discretion of AmaWaterways under this special air promotion. Additional luggage, seat selection, and other ancillary charges imposed by the carrier will apply and can be found on the carrier's website on or after the release of the flight schedule. Registration as a seller of travel does not constitute approval by the State of California. CST#2065452-20. V22FEB06S1

# WINDSTAR<sup>®</sup> CRUISES

180° FROM ORDINARY<sup>®</sup>



SINGLE  
SUPPLEMENTS  
REDUCED  
TO 20%  
ON SELECT  
VOYAGES

Do you love to travel, but like the privacy of your own sanctuary without paying high single supplements? Do you like guided tours with lots of insightful nuggets? Or do you prefer wandering through off-the-beaten path villages and discovering on your own? Or do you just want to relax on the beach, with mojito in hand?

As a solo traveler, you have the freedom to travel when and how you want. Right now is the time to book an extraordinary journey full of wonder and adventure. Enjoy fantastic single supplements as low as 20%.

Like sailing on your own private yacht, you'll traverse picturesque shorelines, stopping at stunning intimate ports with boundless options to take an enriching shore excursion, a private tour, or perhaps choose to spend the day relaxing on sunny teak decks while appreciating genuine, personalized service.

Escape from the everyday and unwind in a luxurious stateroom that you'll have all to yourself, revel in the freedom to choose experiences on your own terms and savor precious alone time – making your cruise exactly as private or social as you like.

You can set sail with confidence on Windstar knowing that your health and safety is a top priority with our [Beyond Ordinary Care Program](#). Plus, we've extended our flexible [Travel Assurance Booking Policy](#) to allow you to cancel cruise reservations departing from now until June 30, 2022 up to 48 hours prior to departure for 100% Future Cruise Credit in case you decide to change your plans.

Check this page often as we'll add and update the sailings based on availability. With these savings, now is the perfect time to book your next adventure, but hurry - voyages are selling out!

# Heart-Shaped Whole-Wheat Pancakes with Strawberry Sauce

**Level:** Easy

**Total:** 50 min

**Prep:** 30 min

**Cook:** 20 min

**Yield:** 4 servings (serving size 2, 5-inch pancakes)

## Ingredients:

3/4 cup all-purpose flour  
3/4 cup whole-wheat flour  
1 1/2 teaspoons baking powder  
1/2 teaspoon baking soda  
1/4 teaspoon salt  
2 large eggs  
1 cup low-fat buttermilk  
1/2 cup non-fat milk  
1 tablespoon honey  
1/4 teaspoon vanilla  
Strawberry sauce, recipe follows  
Confectioners' sugar, optional

## Strawberry sauce:

16 ounces strawberries, fresh or frozen (unsweetened, thawed)  
1 teaspoon lemon juice  
2 tablespoons maple syrup

## Directions:

- 1 Preheat oven to 200 degrees F. Preheat a large nonstick griddle or skillet over a medium-low flame.
- 2 In a medium bowl, whisk together the dry ingredients (flour through salt). In another medium bowl, beat together the eggs, buttermilk, non-fat milk, honey and vanilla.
- 3 Stir the wet ingredients into the dry ingredients, mixing only enough to combine them. The batter will be somewhat lumpy.
- 4 Use a 1/3 cup measuring cup to ladle the batter onto the griddle or skillet. Flip the pancake when the top is bubbling and it is golden brown on the bottom. Then cook until the other side is golden brown. Hold on an oven proof plate in the oven until the entire batch is ready. When all the pancakes are ready, cut them into heart shapes with a heart shaped cookie cutter. Ladle about 1/3 cup of the strawberry sauce onto each plate, place pancakes on top and sprinkle with confectioners' sugar, if using.

## Strawberry sauce:

**Yield:** 4 servings (serving size about 1/3 cup)

- 5 Puree strawberries to a chunky puree. Heat them in a small saucepan over a low flame, until they are just warm. Stir in lemon juice and maple syrup.

Recipe courtesy Bile Krieger, 2005. All Rights Reserved.



# You Won't Be Single For Long Vodka Cream Pasta

**Level:** Easy

**Total:** 25 min

**Prep:** 5 min

**Cook:** 20 min

**Yield:** 4 servings

## Ingredients:

1 tablespoon extra-virgin olive oil, once around the pan in a slow stream  
1 tablespoon butter  
2 cloves garlic, minced  
2 shallots, minced  
1 cup vodka  
1 cup chicken stock  
1 can crushed tomatoes (32 ounces)  
Coarse salt and pepper  
16 ounces pasta, such as penne rigate  
1/2 cup heavy cream  
20 leaves fresh basil, shredded or torn  
Crusty bread, for passing

## Directions:

- 1 Heat a large skillet over moderate heat. Add oil, butter, garlic, and shallots. Gently sauté shallots for 3 to 5 minutes to develop their sweetness. Add vodka to the pan, 3 turns around the pan in a steady stream will equal about 1 cup. Reduce vodka by half, this will take 2 or 3 minutes. Add chicken stock, tomatoes. Bring sauce to a bubble and reduce heat to simmer. Season with salt and pepper.
- 2 While sauce simmers, cook pasta in salted boiling water until cooked to al dente (with a bite to it). While pasta cooks, prepare your salad or other side dishes.
- 3 Stir cream into sauce. When sauce returns to a bubble, remove it from heat. Drain pasta. Toss hot pasta with sauce and basil leaves. Pass pasta with crusty bread.

